

2418LG1 Fiber Optic Distribution/Drop Splice Closure

Protection For Small Fiber Count Cables

Small fiber count cables are becoming increasingly popular for cable television and telephony applications. Cicada's 2418LG1 Fiber Optic Distribution/Drop Splice Closure can efficiently protect optical splices when using these cables. For most drop applications, or as a general splice closure, the 2418LG1 closure package contains all the components you need in one box.

This closure is easy to install and can fit in areas where space is limited. Above ground, you can use it in aerial, building, and pedestal installations. Below ground, use the 2418LG1 closure in hand-holes, manholes and direct buried applications.

Compact Design, High Splice Capacity

The 2418LG1 Splice Closure consists of two impact resistant thermoplastic cover halves fastened by five stainless steel clamps. Each end of the closure accepts one or two cables within the size range of 0.23–0.36 inches (6–9mm) O.D. while splice holders in the closure can accommodate a total of 18 single fiber fusion splices. Flexible polyurethane grommets seal the cable entry ports.

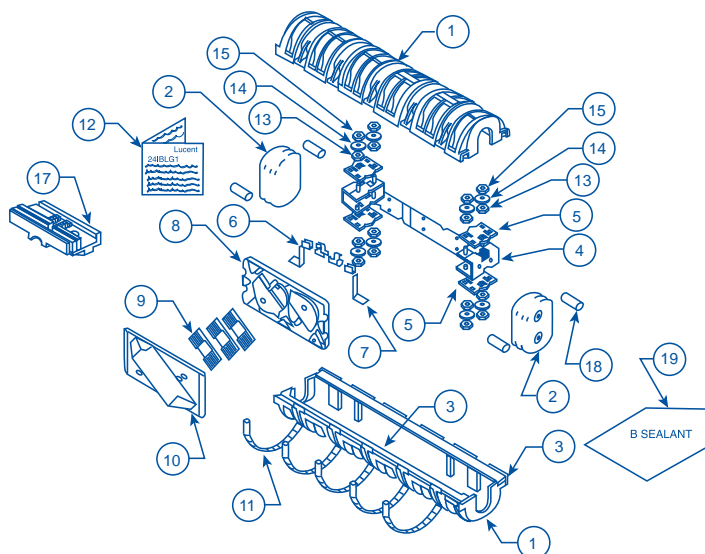
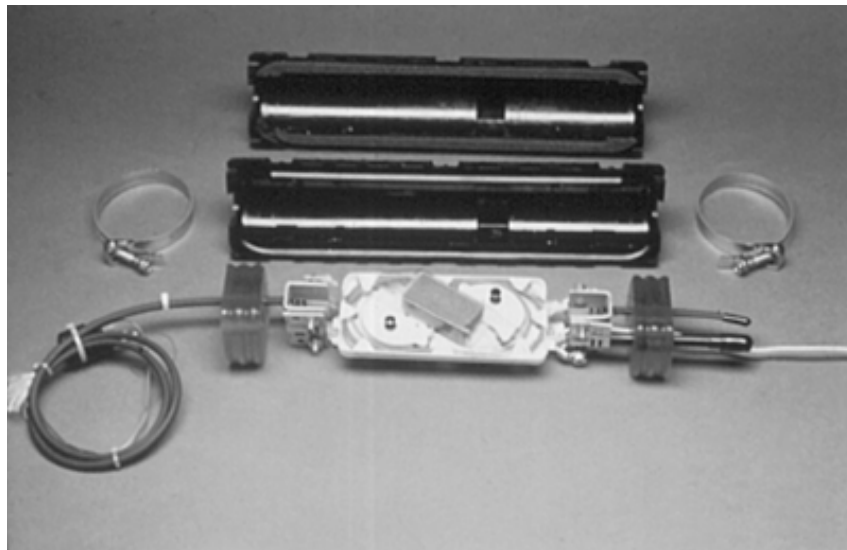
All materials required for sealing, bonding and grounding the cables are included. Each closure measures 13 inches (33cm) by 3.75 inches (9.525 cm) and weighs 3 pounds (1.35kg).

Good Reasons to Select Cicada Technology's Fiber Optic Components

Cicada's 2418LG1 Fiber Optic Distribution/Drop Splice Closure is an economical choice for small fiber count cable applications. State-of-the-art materials assure high performance and reliability. Closures are easy to order, and easy to install with ordinary hand tools. Each closure can be used in different configurations for maximum flexibility. Suitable for straight or butt splice configurations, the closure's small size allows installation in limited space.

Ordering Information

Product Code	Description	Part Number
2418LG1	Splice Closure Package	107 502 056CT



Item	No.	Description
1	2	Cover half
2	2	Grommet
3	2	Rubber Seal
4	1	Sheath Grip Assembly
5	4	Grip Plate
6	2	Bond Clip
7	2	Bond Lug
8	1	Splice Tray
9	3	Splice Holder
10	1	Splice Tray Cover
11	5	Hose Clamps
12	1	Instruction Sheet
13	9	Lock Washer
14	9	Flat Washer
15	15	Hex Nut
16	1	Antiseize Compound
17	4	Dielectric Grip Plate
18	4	FR Cord
19	2	B-Sealant
20	1	Syringe